

Video Recording Link

MODULE 8 L01

Respiratory System: Respiration

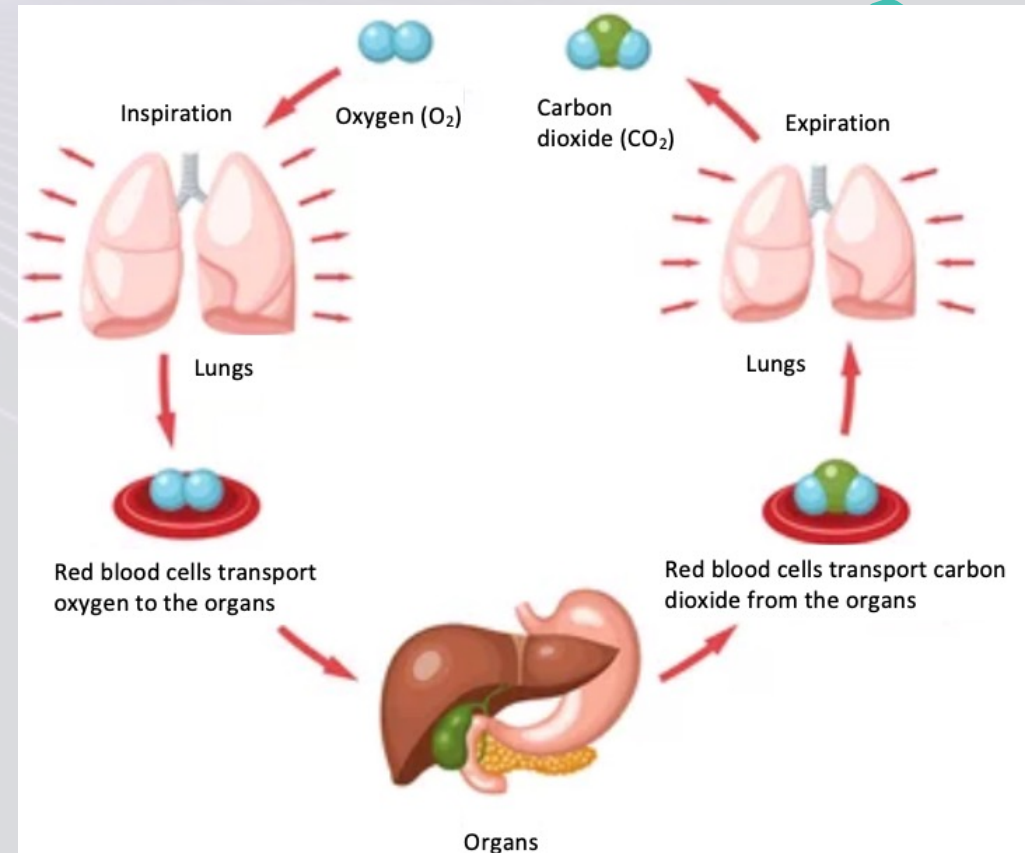
Dr. Lisa Brinn

lbrinn@fiu.edu

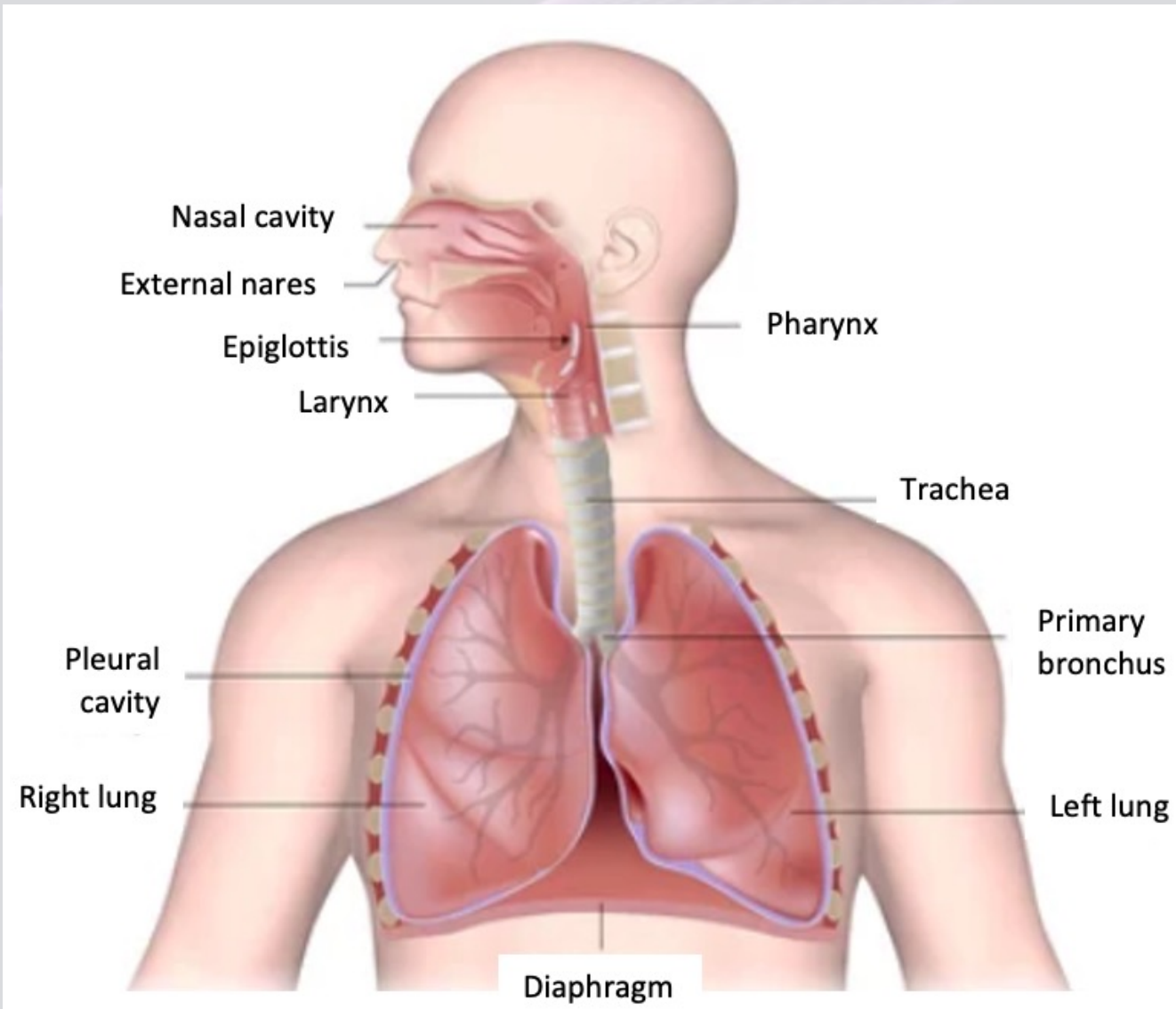


1. Basic Steps in Respiration

1. Ventilation
2. Pulmonary gas exchange
3. Transport of O_2 and CO_2 by the blood
4. Systemic gas exchange
5. Cellular respiration

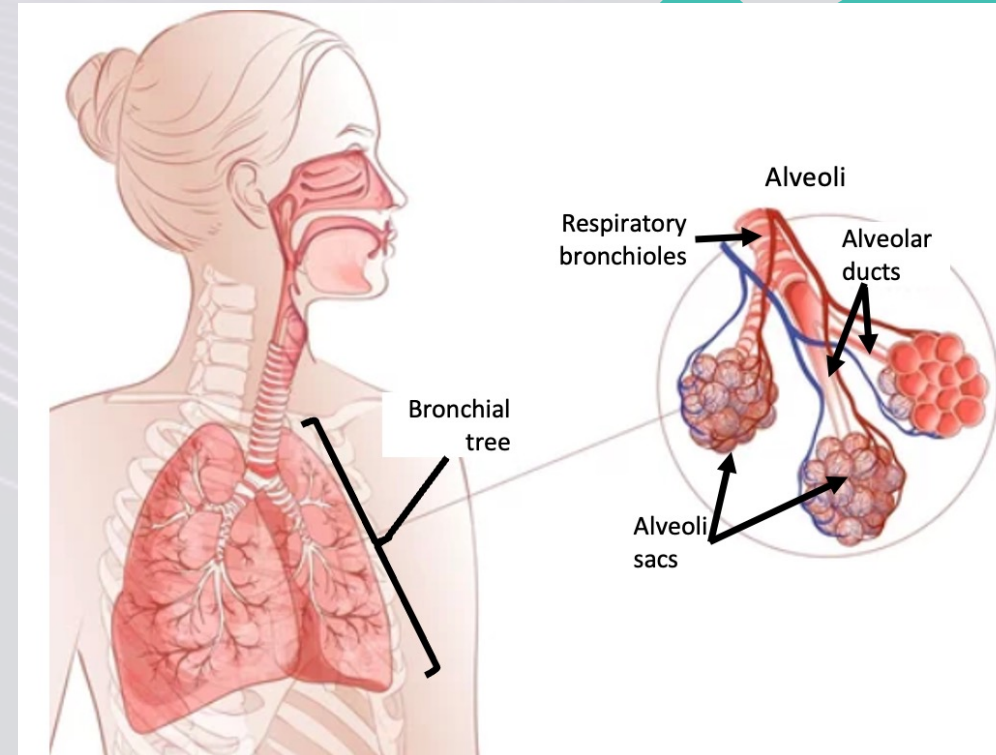
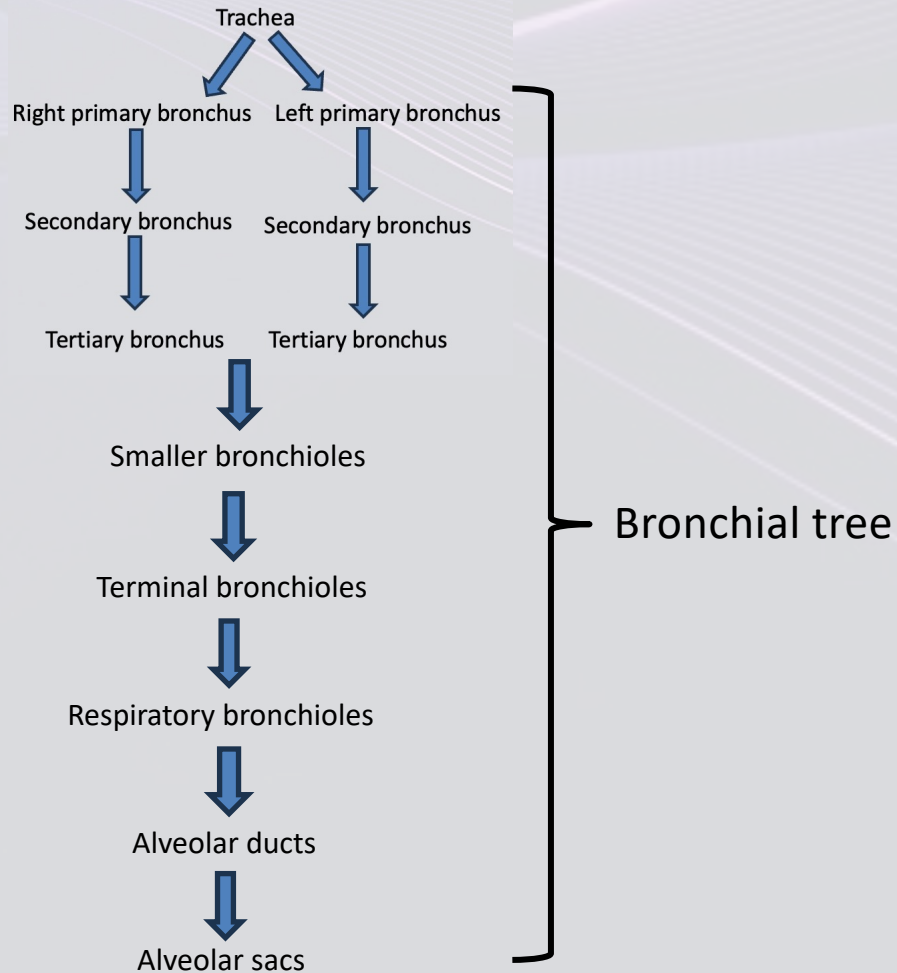


Upper Respiratory Tract Review



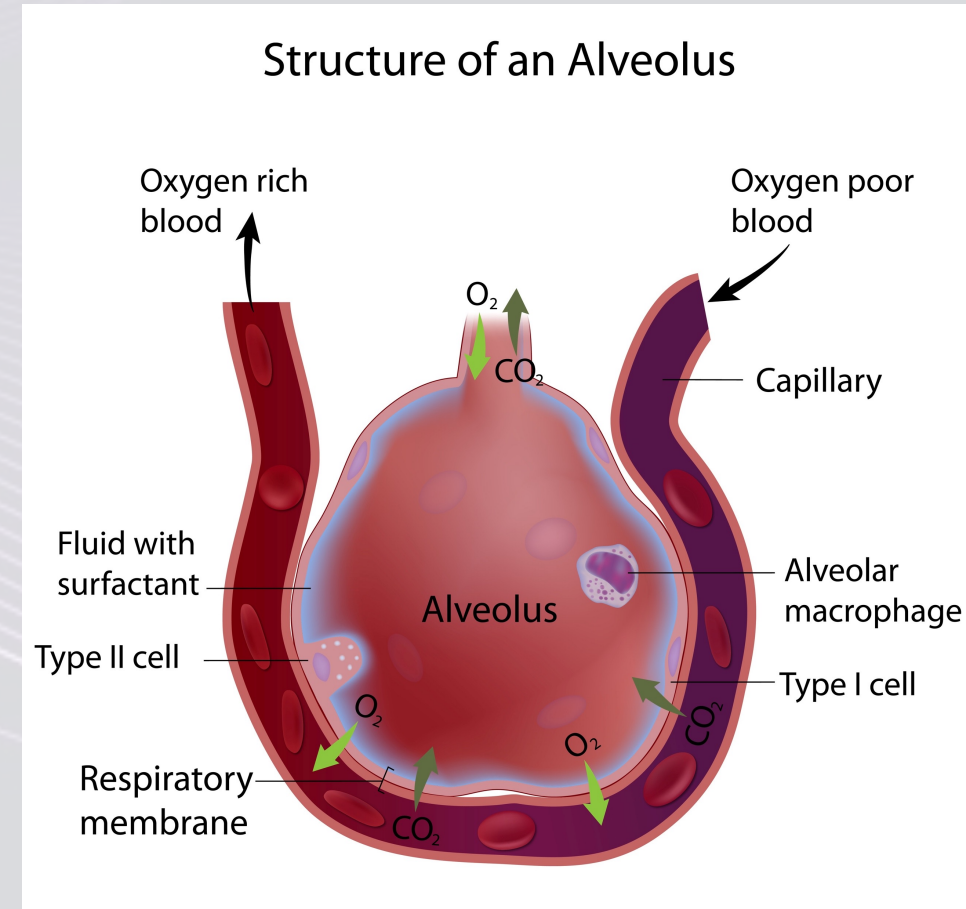
Lungs

- Contain most of the components of the respiratory system
- Contains all branches of primary bronchus = bronchial tree



Alveoli

- Air-filled sacs that extend from alveolar ducts
- Organized into sacs
- Epithelium + basement membrane
 - ❖ Thinness is vital
 - ❖ Epithelial cell types
 - Type I alveolar cells
 - More numerous
 - Main site of gas exchange
 - Type II alveolar cells
 - Also called septal cells
 - Secrete alveolar fluid
 - Surfactant
 - ✓ Lowers surface tension
 - Macrophages



Normal Chloride Ion Secretion

